

Client



Nature's FUSIONS
ESSENTIAL OILS

Source



Black Spruce (Picea mariana)
NF-BLKS-19-A

Sample

Black Spruce (Picea mariana)
 Batch #:..... | NF-BLKS-19-A
 Type:..... | Essential Oil
 CAS Number:... | 91722-19-9
Nature's Fusions

Client



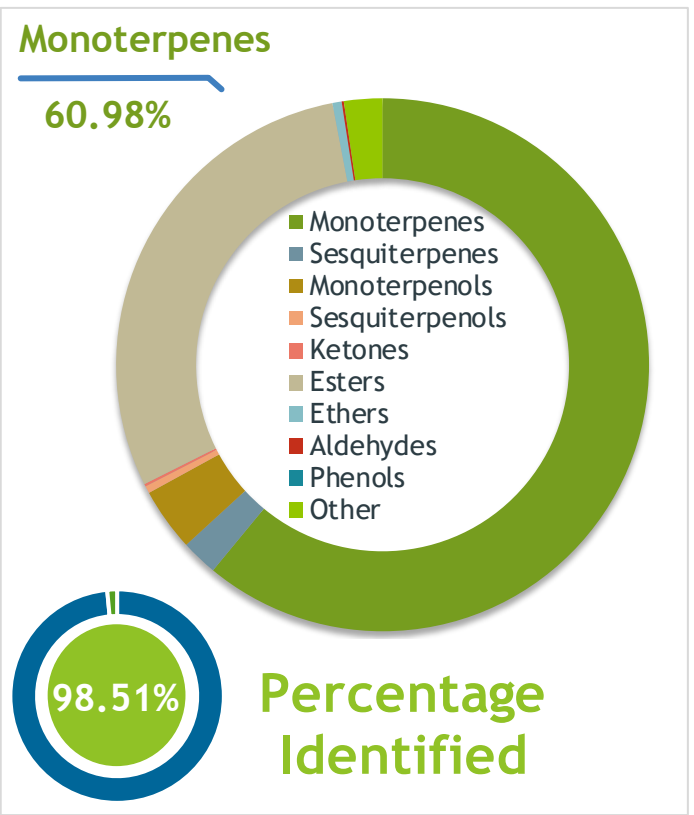
Nature's FUSIONS
ESSENTIAL OILS

Website



Primary

28.68% | Bornyl acetate
16.87% | alpha-Pinene
10.88% | beta-Pinene



Result



Conclusion

No adulterants, diluents, or contaminants were detected via this method. This oil meets the expected profile for genuine essential oil of Black Spruce (Picea mariana)

Internal Number: | EVS-2871



Essential Validation Services

747 SW 2nd Ave IMB 12 Suite 306
Gainesville, FL 32601

317.361.5044 |
<https://essentialvalidationservices.com/>
 adam@essentialvalidationservices.com



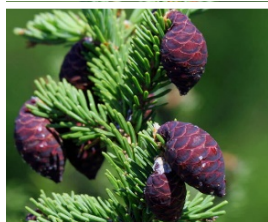
Monoterpenes	60.98%	60.98%
Sesquiterpenes	2.21%	2.21%
Monoterpenols	3.83%	3.83%
Sesquiterpenols	0.44%	0.44%
Ketones	0.15%	0.15%
Esters	29.37%	29.37%
Ethers	0.56%	0.56%
Aldehydes	0.13%	0.13%
Phenols	0.00%	0.00%
Other	2.33%	2.33%

ESSENTIAL VALIDATION SERVICES | 747 SW 2ND AVE GAINESVILLE, FLORIDA 32601 | 317-361-5044

Client


Nature's FUSIONS
 ESSENTIAL OILS

Source



Black Spruce (Picea mariana)
 NF-BLKS-19-A

Total Percentage		98.51%			
Number	RT	Area %	Compound Name	RI	Chemical Family
1	16.96	0.32%	1,8-Cineole	1031.80	Monoterpene Ether
2	10.28	0.01%	1-Hexanol	863.00	Aliphatic Alcohol
3	38.39	0.22%	alpha-Cadinol	1655.00	Sesquiterpenol
4	20.82	0.05%	alpha-Campholenal	1125.29	Monoterpene Aldehyde
5	13.03	0.06%	alpha-Fenchene	946.00	Monoterpene
6	32.46	0.04%	alpha-Humulene	1461.43	Sesquiterpene
7	33.83	0.28%	alpha-Muurolene	1500.25	Sesquiterpene
8	15.82	0.11%	alpha-Phellandrene	1002.00	Monoterpene
9	12.89	16.87%	alpha-Pinene	936.10	Monoterpene
10	21.35	0.10%	alpha-Pinocarveol	1143.75	Monoterpenol
11	16.34	0.11%	alpha-Terpinene	1014.00	Monoterpene
12	23.31	0.93%	alpha-Terpineol	1191.71	Monoterpenol
13	28.90	0.14%	alpha-Terpinyl acetate	1353.00	Monoterpene Ether
14	12.59	0.14%	alpha-Thujene	927.80	Monoterpene
15	31.38	0.19%	beta-Caryophyllene	1427.14	Sesquiterpene
16	14.68	10.88%	beta-Pinene	974.00	Monoterpene
17	33.50	0.01%	beta-Selinene	1487.57	Sesquiterpene
18	22.40	1.58%	Borneol	1168.71	Monoterpenol
19	26.85	28.68%	Bornyl acetate	1288.29	Monoterpene Ester
20	11.46	0.02%	Bornylene	902.50	Monoterpene
21	13.49	10.79%	Camphene	950.30	Monoterpene
22	21.74	0.37%	Camphene hydrate	1151.00	Monoterpenol
23	21.57	0.15%	Camphor	1147.55	Monoterpene Ketone
24	9.76	0.03%	cis-Hex-3-en-1-ol	850.00	Aliphatic Alcohol
25	32.74	0.02%	cis-Muurolo-4(14),5-diene	1465.75	Sesquiterpene
26	24.61	0.06%	Citronellol	1229.25	Monoterpenol
27	10.70	0.03%	Cyclofenchene	890.00	Monoterpene
28	16.09	9.42%	delta-3-Carene	1008.00	Monoterpene
29	34.52	0.88%	delta-Cadinene	1524.14	Sesquiterpene
30	28.37	0.05%	dihydrocarvyl acetate	1330.50	Monoterpene Ester
31	20.35	0.05%	Fenchol	1099.10	Monoterpenol
32	24.39	0.26%	Fenchyl acetate	1222.00	Monoterpene Ester
33	34.28	0.27%	gamma-Cadinene	1515.29	Sesquiterpene
34	34.99	0.20%	gamma-Cuprenene	1535.50	Sesquiterpene
35	33.11	0.11%	gamma-Muurolene	1478.86	Sesquiterpene

 ESSENTIAL VALIDATION SERVICES | 747 SW 2ND AVE GAINESVILLE, FLORIDA 32601 | 317-361-5044

